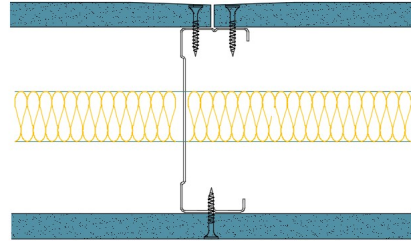


92-S-53(25) - SPEEDLINE System Data Sheet - Version V1 (24-10-23)

SPEEDLINE 92mm 'C' Stud Partition @600mm Ctrs,
with Siniat GTEC 12.5mm dB Board each side,
25mm APR



System Performance Breakdown

Fire Resistance:

BS476 Part 22:1987:

Test Ref & Date or Applied Ref & Report:

Max Height:

Thickness:

Duty Grade: BS 5234: Part 2:1992:

Sound Insulation:

30/30 Minutes (Integrity/Insulation).

BRE 269826 - BRE Report P102396-1011C

Refer to Speedline Specification Clause

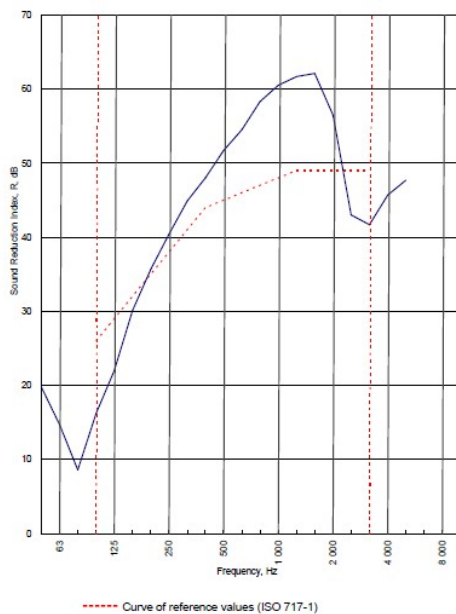
119 mm. (At Base Track, Excluding Finishes)

Medium - Annexes A-F

45 R_w dB, Date Tested or Assessed Against - 70-S-53(25)


Test Code:
H17508AA
Test Date:
28/07/2011


Freq. Hz	R dB
50	19.8
63	14.7
80	8.6
100	16.2
125	22.0
160	30.1
200	35.7
250	40.4
315	44.9
400	48.0
500	51.7
630	54.5
800	58.3
1000	60.5
1250	61.7
1600	62.1
2000	56.5
2500	43.0
3150	41.7
4000	45.7
5000	47.7
6300	
8000	
10000	





Rating according to BS EN ISO 717-1:1997	R_w (C;Ctr) = 45 (-4;-10) dB		
Evaluation based on laboratory measurement results obtained by an engineering method:	$C_{50-3150} = -7$ dB	$C_{50-5000} = -6$ dB	$C_{100-5000} = -3$ dB
	$C_{0-50-3150} = -17$ dB	$C_{0-50-5000} = -17$ dB	$C_{0-100-5000} = -10$ dB

TESTED AT ONE OF THE UKAS ACCREDITED LABORATORIES BELOW

B.T.C (H-Ref on Graph) 

B.R.E 

AIRO 

S.R.L 

Customer: Metsec plc Hpcsec Division

BTC 17508A: Page 9 of 11



SPEEDLINE Drywall Systems, Adsetts House, 16 Europa View, Sheffield Business Park, Sheffield, S9 1XH.

Tel: 0114 231 8030.

Email: enquiries@speedlinedrywall.co.uk

(As per the requirements set out in ISO/IEC 17025:2017 regarding test data the results stated have been carried out by voestalpine Metsec plc as part of the contract to supply Speedline Metal Sections to SIG Plc)